

**CITY OF ALLEGAN
&
ALLEGAN TOWNSHIP
JOINT RECREATION PLAN**

2014-2018

**PREPARED BY:
THE CITY OF ALLEGAN PARKS COMMISSION
AND ALLEGAN TOWNSHIP PLANNING
COMMISSION WITH THE ASSISTANCE OF THE
WEST MICHIGAN REGIONAL PLANNING
COMMISSION**

TABLE OF CONTENTS

Introduction	1
Community Description	2
Administrative Structure	4
Parks Commission and City Council	4
Planning Commission and Township Board	4
School District	4
Allegan County	4
Staff and Volunteers	5
Budget Information	5
Recreation Inventory	7
City of Allegan	7
Hanson Park	7
Jaycee Park	7
(John) Mahan Park	8
Riverfront Park	8
Veterans Memorial Park	8
Rossman Esplanade Park	9
Sue Lange Memorial (Triangle) Park	9
Trestle Trail Park	9
(Allegan) Wellness and Sports Complex	9
Water Street Riverfront Park	10
The Mill District	10
Cook Street Park	11
Other Facilities in the City of Allegan	11
Allegan District Library	11
Allegan Public Schools	11
Griswold Auditorium	11
Oakwood Cemetery	11
Allegan Township	14
Allegan County	14
State of Michigan Facilities Located within Region 8	14
State of Michigan Facilities (Located within 50 miles of Region 8)	15
State Game Areas	15
Boat Launch Sites	16
Campgrounds	16
Golf Courses	17
Ski Areas Within and Near Region 8	17
Plan Adoption	18
Description of Planning and Public Input Process	19
Issues, Goals, and Objectives	20
Recreation Standards	25
Accessibility Evaluation	26
Status Report of Grant Assisted Parks	28
Action Program	29
Conclusion	36
Appendix A: Community Description Supplemental Information	
Appendix B: Plan Adoption	
Map 1: Community Location	3
Map 2: City of Allegan Recreation Map	12
Map 3: Allegan Township Recreation Map	13

Introduction

The City of Allegan and Allegan Township have established the importance of recreation to the area's quality of life by maintaining up-to-date Recreation Plans, an active Parks Commission (Allegan City) comprised of seven appointed community members and a Planning Commission (Allegan Township) that has made recreation a high priority in the Township. This plan represents the ideas of City and Township officials and residents through meetings and an "Issue Identification" Workshop. The planning process was a combined effort of the City's Parks Commission, the Township's Planning Commission, City and Township Officials, interested citizens, and the West Michigan Regional Planning Commission.

The Action Plan provides a schedule for completing a number of improvements. The City and Township should strive to follow the established schedule, but should consider the schedule a "living guide" since funding opportunities and other events may not always mesh with the schedule. The integrity of the plan will not be compromised if actions are rescheduled during the five-year planning period. Finally, this plan should be a working document that is frequently used for guidance and updated if necessary. The next complete update of the plan should occur in 2018.

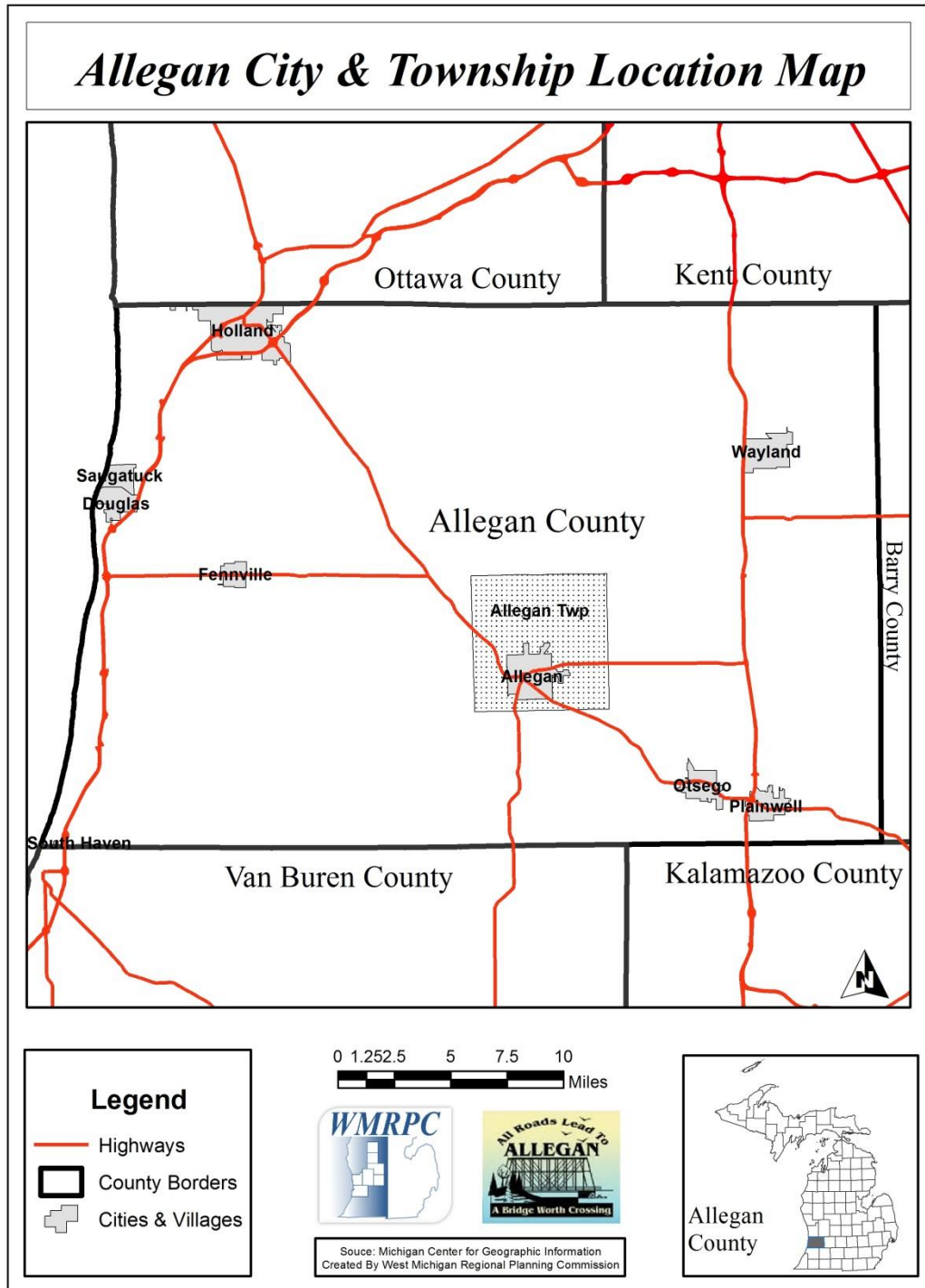
Community Description

This recreation plan was prepared for the City of Allegan and Allegan Township. The two communities are located in central Allegan County (Map 1).

The plan focuses on providing recreation opportunities to residents of the City of Allegan and Allegan Township through the acquisition, development, and maintenance of community-owned parks. While the primary focus is on providing the area's residents with recreation opportunities, improvements to the area's park system will benefit adjoining townships and nearby communities, schools, and visitors.

Supplemental information describing the Area's physical and social features is included in Appendix A to allow people to see the information and to meet the guidelines for recreation plans.

Map 1



Administrative Structure

Parks Commission and City Council

The City's residents are the final authority in the City since they elect the City Council, which must approve any improvements to the City's parks. Allegan's recreation-related planning activities are undertaken by the Parks Commission, which reports to the City Council. The Parks Commission is comprised of appointed members of the community. The City Council and Parks Commission are listed below:

Allegan City Council

- Betty McDaniel, Mayor
- Rick Day, Mayor Pro tem
- Tom Clark
- Nancy Ingalsbee
- Deb Leverage
- Rachel McKenzie
- Charles Tripp

Allegan Parks Commission

- Aaron Haskin (City Staff)
- Bert Brouwer
- Betty McDaniel
- Paula Mintek
- Lori Perkins
- Cyndi Reed
- Becky Rininger
- Ruth Smith

Planning Commission and Township Board

The Township's residents are the final authority since they elect the Township Board, which must approve any expenditures. Allegan Township's recreation-related planning activities are undertaken by the Planning Commission, which reports to the Township Board. The Planning Commission is comprised of appointed members of the community. The Township Board and Planning Commission are listed below:

Allegan Township Planning Commission

- Terry Skoglund, Chairman
- Mike Buese
- Jim Connell
- Ted Heckman
- Hollis Hough
- Marty Ruiter
- Karl Spreitzer

Allegan Township Board

- Steve Schulz, Supervisor
- Linda Evans, Clerk
- Jane Waanders, Treasurer
- Karl Spreitzer, Trustee
- W. Seth Hough, Trustee
- Frank Tooker, Building Inspector

School District

The City and Township are served by Allegan Public Schools.

Allegan County

Allegan County maintains many parks (see recreation inventory).

Staff and Volunteers

Volunteers include the eight members of the Allegan Parks Commission (appointed by the City Council) as well as others throughout the City. Volunteers also include the seven members of the Allegan Township Planning Commission, the Allegan Township Board, as well as others throughout the Township.

Budget Information

Table 1 identifies general budget information related to the City and recreation-related line items. In addition to the General Fund, the City also has several other categories of expenditures and revenues, but this provides a good summary related to parks, recreation, maintenance, programs, the cemetery, and other categories related to recreation.

Table 1: Summary of Expenses and Revenues for the City of Allegan – 2012 and 2013

Revenues		
Category	2011-12 Budget	2012-13 Budget
Parks	\$41,950.00	\$40,200.00
Cemetery	\$23,500.00	\$53,500.00
Griswold Auditorium	\$22,600.00	\$15,000.00
Historic District	\$0.00	\$0.00
Arts and Entertainment	\$6,000.00	\$0.00
Buildings and Grounds	\$7,000.00	\$5,000.00
Other General Fund Categories	\$4,943,027.00	\$3,923,426.00
General Fund Expenses	\$5,044,077.00	\$4,037,126.00
Expenses		
Parks	\$261,246.00	\$333,600.00
Cemetery	\$88,915.00	\$123,680.00
Griswold Auditorium	\$55,214.00	\$125,000.00
Historic District	\$0.00	\$0.00
Arts and Entertainment	\$139,055.00	\$0.00
Buildings and Grounds	\$486,529.00	\$480,825.00
Other General Fund Categories	\$3,443,435.00	\$2,915,721.00
General Fund Revenues	\$4,474,394.00	\$3,978,826.00

Source: City of Allegan

One major source of funding for recreation projects in the City of Allegan is the Capital Sinking Fund. Interest from this fund generated \$126,000 in 2012.

Table 2 identifies general budget information related to the Township. The Township has several categories of expenditures and revenues, and this list provides a good summary related to the Township's budget for the current and previous year.

Table 2: Summary of Budgeted Expenses and Revenues for Allegan Township – 2012 and 2013

Expenses		
	2012	2013
Trustees	\$29,344.00	\$35,356.00
Supervisor	\$41,536.00	\$42,430.00
Elections	\$8,025.00	\$0.00
Assessor	\$34,705.00	\$29,886.00
Clerk & Dep.	\$27,737.00	\$53,077.00
Board of Review	\$2,650.00	\$2,650.00
Treasurer & Dep.	\$41,327.00	\$43,882.00
Township Hall	\$76,750.00	\$110,750.00
Mobile Home Tax	\$6,800.00	\$6,800.00
Cemetery	\$9,140.00	\$10,140.00
Unallocated	\$2,500.00	\$2,500.00
Permits	\$14,000.00	\$16,000.00
Planning Board/ZBA	\$20,885.00	\$21,885.00
Building Inspector	\$13,200.00	\$13,250.00
Recycling, Street Lights, etc.	\$41,957.00	\$35,350.00
Ambulance	\$22,000.00	\$23,000.00
Recreation & Culture	\$10,000.00	\$10,000.00
Other	\$348,322.00	\$304,096.00
Total Expenditures	\$925,878.00	\$936,052.00
Revenues		
Fund Balance	\$358,528.00	\$341,802.00
Tax Levy	\$120,720.00	\$122,000.00
Recycling Surcharge	\$41,200.00	\$41,450.00
Street Lights on Tax	\$7,790.00	\$7,900.00
Mobile Home Tax	\$8,000.00	\$8,000.00
Delinquent Tax	\$20,000.00	\$17,000.00
Building Permit Fees	\$12,000.00	\$16,000.00
Non Business License	\$14,000.00	\$16,000.00
MI Inc, MI Sales	\$260,000.00	\$280,000.00
Cemetery Lots	\$2,000.00	\$3,000.00
Hall Rental	\$6,000.00	\$6,000.00
Charges for Services	\$37,800.00	\$37,800.00
Other	\$38,240.00	\$39,100.00
Total Revenues	\$926,728.00	\$936,052.00

Source: Allegan Township

Recreation Inventory

The recreation inventory provides a summary of facilities in the Planning Area and surrounding areas.

City of Allegan

The City of Allegan has a number of parks that serve a variety of functions in the community – from active to passive recreation activities. Map 2 identifies the locations of each site.

Hanson Park – This park is located at the west end of Riverfront Park, behind Griswold Auditorium and the Library. Facilities at the 1.2 acre park include a pavilion, paved parking (shared with Auditorium and Library), a paved walkway, decorative street lights with banners and hanging flower baskets, tables (including one accessible table), and benches. The park has a portable restroom and restrooms are also available at the adjacent public facilities (Auditorium and Library). There a new play structure that was added since the last plan was performed. The park is nicely landscaped.

Surrounding land uses include the public facilities, the central business district is nearby, some office space, and residential uses are also nearby.

The overall condition of the park is good. Strengths of the park include its central location, its proximity to the Kalamazoo River and Riverfront Park, and the nice landscaping. Weaknesses include noise from M-89 and the fact that the park is rather isolated once nearby facilities close for the day.

Summary: 1.2 acre park with playground and picnic facilities.

Jaycee Park – This 6.2 acre park is located on the north side of Monroe Street on the Kalamazoo River. The park has a wide variety of facilities including a recently developed skate-park, a leash-free dog park, a full basketball court, a lighted general purpose field recently converted from a game field, a 15' x 40' picnic shelter, ten picnic tables, an indoor restroom, a fishing pier, signage, paved parking and walkways, seven grills, six park benches, drinking water, lighting, natural areas, and nice landscaping. There is a 9,700 square foot “Kid Kingdom” community-built playground as well as some swings, slides, and spring toys. The park is also woven into the City’s growing network of trails, including Trestle Trail, which includes a pedestrian bridge crossing the Kalamazoo River.

Surrounding land uses include residential land uses, the City’s Police Station, and the central business district.

The overall condition of the park is good. Strengths of the park include the central location, the variety of activities, and the location on the Kalamazoo River. Weaknesses are very limited.

Summary: 6.2 acre park with playground equipment and access to the Kalamazoo River.

(John) Mahan Park – This park is on the east end of Riverfront Park and occupies 0.7 acres. The park is nicely landscaped and includes a gazebo/stage and amphitheater-style seating. Other amenities include three picnic tables, plaques, paved sidewalks, a portable restroom, and lighting with banners and hanging flower baskets. Parking is shared with downtown businesses.

Surrounding land uses include the central business district, Riverfront Park, and Allegan's historic bridge.

The park is in very good condition. Strengths of the park include the central location, the location on the Kalamazoo River, and the nice trees and landscaping. Weaknesses are very limited.

Summary: 0.7 acre passive park with seating for plays or music.

Riverfront Park – This 1.3 acre park is a large part of Allegan's identity, since it is very visible to travelers on M-89 and showcases the Downtown and the City's location on the Kalamazoo River. The park has 600 feet of wooden boardwalk along the waterfront (linking Hanson and Mahan parks). There are views of the downtown, the historic bridge, M-89, and a lily pond from the boardwalk. Other facilities that add to the park's character include six fountains in the Kalamazoo River, a fishing pier, decorative lights with banners and hanging flower baskets, 20 benches, two picnic tables, street trees, and trash cans. The area also includes a Veterans Memorial with a flag pole. Parking, including accessible parking, is convenient to the entire length of the park and is shared with the downtown businesses. Parking is linked with sidewalks made of both concrete and decorative pavers.

Surrounding land uses include Allegan's downtown, the connected parks, the Library and Griswold Auditorium, and the historic bridge.

The park is in good condition. Strengths of the park include the central location, the location on the Kalamazoo River, the nice trees and landscaping, the wonderful views, and the linkages the park creates. Weaknesses are very limited, and relate to the difficulty of maintaining all of the amenities.

Summary: 1.3 acre linear park along the Kalamazoo River.

Veterans Memorial Park – This 0.1 acre park is located adjacent to Riverfront Park. The site contains a veterans memorial and a flagpole. Access to parking and Riverfront Park facilities is a key strength of the location (see Riverfront Park above). Updates for this park are planned (and funded).

Summary: Small park with veterans memorial and flagpole.

Rossman Esplanade Park – This 2.5 acre park is located at the intersection of Marshall Street and Fifth Street. There are really four areas separated by the two streets. The park includes four picnic tables, many large trees, limited signage, and parking along Fifth Street. There is also a tennis court in the northeast portion of the park, with fencing around the court. There are sidewalks around the park, but many are in poor condition. Surrounding land uses are primarily residential.

The park is well-maintained, but in poor condition due to the age of sidewalks and lack of facilities. Strengths of the park include the central location, the nice trees, and the potential for improvements. Weaknesses include the lack of facilities, the fact that the park is divided by a busy street (Marshall Street), and the feeling that the park is too closely tied to the adjacent homes (it is difficult to determine where the park stops and private yards begin). The fence around the tennis court is too low to prevent stray shots from going into the street.

Summary: 2.5 acre park with tennis court and picnic areas.

Sue Lange Memorial (Triangle) Park – This 0.4 acre park is a small formal garden with a fountain and two park benches. Other amenities include decorative lighting and nice landscaping.

Surrounding land uses are primarily residential.

Strengths of the park include its central location, its unique character, and the nice landscaping. Weaknesses include the fact that it is difficult to access due to traffic on Marshall Street, traffic noise, and the lack of parking.

Summary: 0.4 acre passive garden park.

Trestle Trail Park – This 2.5 acre park is adjacent to Jaycee Park. A paved pathway runs parallel to a wetland preservation along the Kalamazoo River. The highlight of the park is the large pedestrian bridge that crosses the river.

Surrounding land uses include residential land uses, the City's Police Station, and the central business district on the south side of the park. Residential uses are located on the north side of the Kalamazoo River.

Strengths of the park include its accessibility, its central location and proximity to the Police Station, its connection to Jaycee Park, and its location on the Kalamazoo River. Weaknesses are difficult to define, but relate to a feeling of a lack of identity or purpose (signage could help).

Summary: 2.5 acre linear park that crosses the Kalamazoo River.

(Allegan) Wellness and Sports Complex – This 63 acre park, located at 29th Street and 114th Avenue, is the area's primary area for active recreation activities. The park is

owned and maintained by the City of Allegan, but is located east of the City – in Allegan Township. The park contains a wide variety of facilities including four baseball fields and two softball fields with seating, fencing, backstops, dugouts, and scoreboards. Accessible parking is designated. Separate parking is available for the fields and a batting cage is also maintained. The park also contains a football field and four soccer fields with seating and nets. Other amenities include a 30' x 60' picnic shelter with eight picnic tables, 12 additional picnic tables, complete restrooms with water and electricity, access control, signage and rules, nice landscaping, lighting, a concession stand/building with two benches and four picnic tables, a payphone, a bottled-drink machine, playground equipment, a large maintenance shed, and a paved six-foot-wide pathway that circles the entire park.

Surrounding land uses include wooded areas and wetlands, and the City's municipal airport. Perrigo's manufacturing facilities are just west of the park.

Strengths of the park include the variety of facilities and the overall good condition of the park. Parking seems to be adequate and the area is surrounded by woods and low-key development – making it a nice quiet setting (when events are not ongoing). Additionally, it seems that the many events that do occur would have very little impact on the surrounding areas. There is limited lighting around the park. Further lighting should accommodate the park's proximity to the airport. The park is nicely landscaped.

Summary: 63 acre active recreation park with soccer, baseball, and other field-oriented activities.

Water Street Riverfront Park – This 0.9 acre linear park is located north of Water Street along the Kalamazoo River, behind several businesses on Water Street. The park includes a gazebo, a picnic table, five park benches, nice landscaping, a drinking fountain, decorative lighting with banners and hanging flower baskets, a boardwalk, and paved sidewalks with brick pavers. Public parking, including accessible parking, is available adjacent to the park. The pathway links to the dam and fishing area on the Kalamazoo River, which is part of a seven acre Mill Area.

Surrounding land uses include several businesses, including Perrigo's retail facility.

Strengths of the park include its overall good condition, its central location in the downtown, and its ability to link several parks and facilities. The location on the river and the steep wooded areas adjacent to the trail also add to the beauty of the site. Weaknesses include the proximity to the backs of businesses, some of which feel isolated and could be improved. The park is not very visible and could use some signage or other means to identify the location as a park.

Summary: Linear park along the Kalamazoo River, linking to the Mill Area.

The Mill District – This 7.0 acre site is located at the dam near the Second Street Bridge. Built facilities include a paved parking area with designated accessible parking, paved

walkways, a bench, and two piers (up & down-stream of the dam). The area is located in the floodplain of the Kalamazoo River and is heavily wooded.

Surrounding land uses include several businesses, including Perrigo's retail facility.

Strengths of the park include its overall good condition, its central location in the downtown, and its ability to link several parks and facilities. The location on the river and wooded areas add to the beauty of the site. The primary weakness is that the site is not very visible and could use some signage or other means to identify the location as a park. Additionally, only a small portion of the seven acres is easily identified as a recreation area.

Summary: Seven acre site located within the floodplain of the Kalamazoo River.

Cook Street Park – This is a 0.2 acre pocket park with a flowing creek/drain through it. The park has a paved pathway linking it to both Cook and River streets and one picnic table. The park is surrounded by low density residential uses.

Strengths of the park include its proximity to residential areas. The primary weakness is its lack of visibility and facilities.

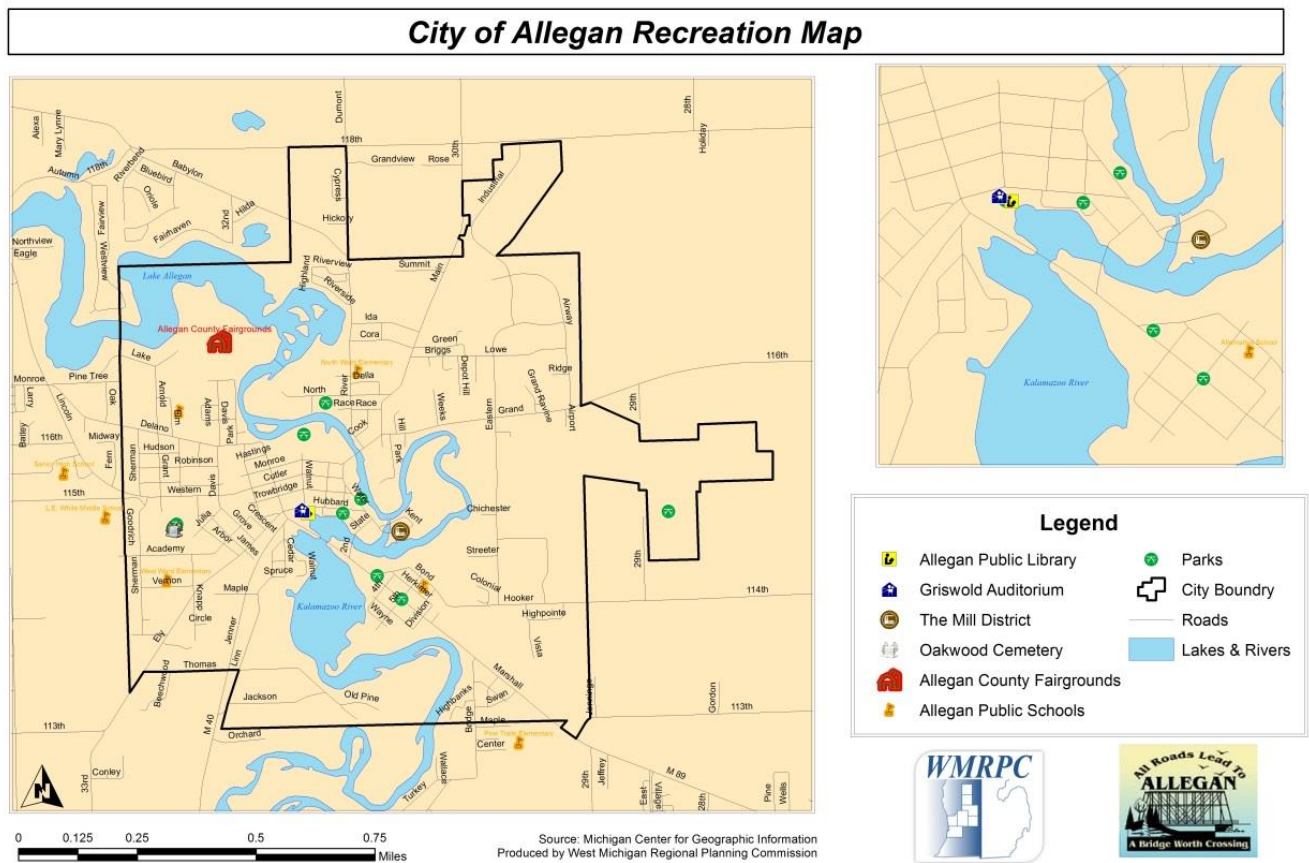
Other Facilities in the City of Allegan

Allegan District Library – The Library is located next to the Griswold Auditorium and Hanson Park on Hubbard Street. The library services the area of the Allegan Intermediate School District and provides access to books, periodicals, videos, DVDs, CDs, and audio books, as well as an on-staff reference librarian. The library also has a children's area and librarian who provides programming and cooperative resources with area schools. The Allegan District Library has internet stations available and a fully computerized card catalog system.

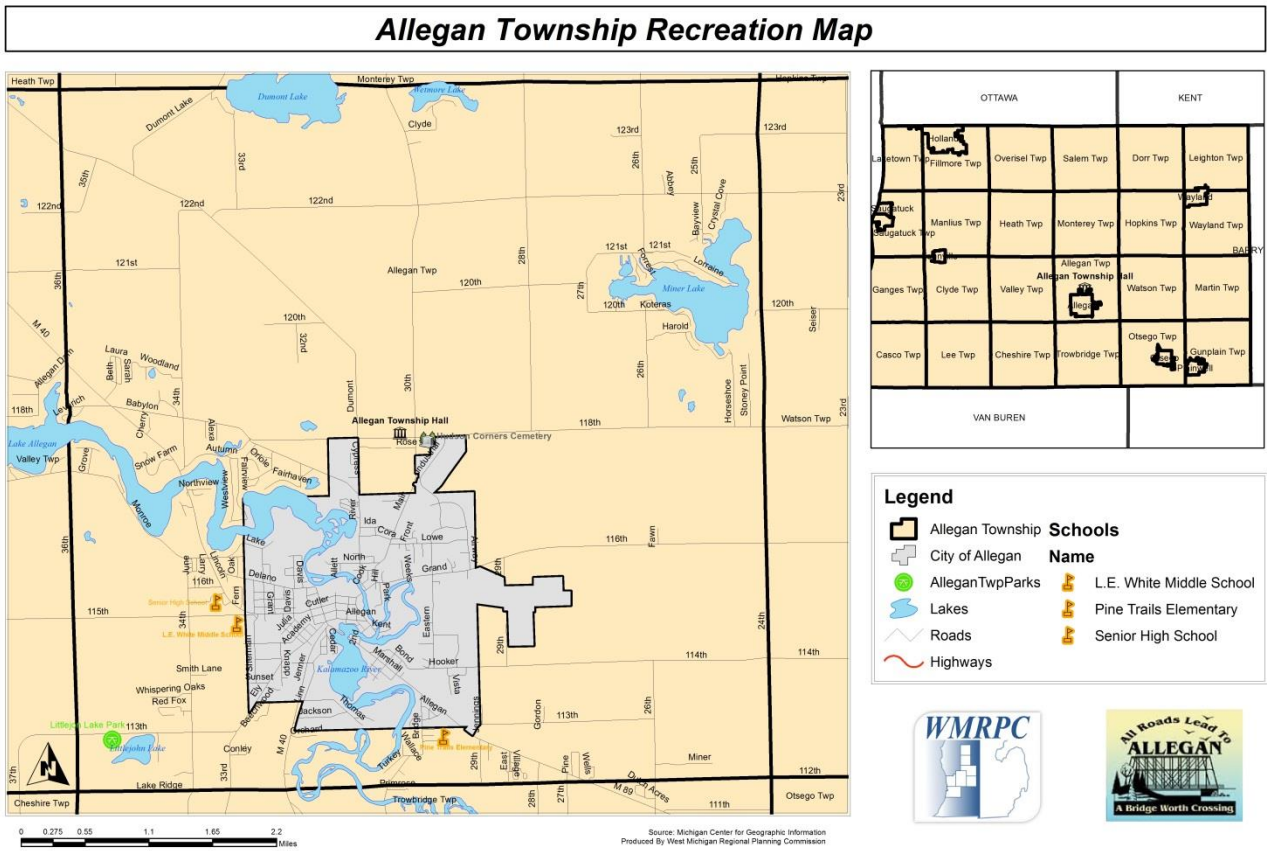
Allegan Public Schools – The Allegan Public School District serves the City of Allegan, Allegan Township, and portions of eight other townships. Facilities include a High School, located at 1560 Lincoln Road; a middle school located at 3300 115th Avenue; and four elementary schools located at 125 Elm Street, 440 River Street, 2950 Center Street, and 630 Vernon Street. Additionally, there is an alternative education school at 550 5th Street. The schools all have a wide variety of outdoor and indoor recreation facilities.

Griswold Auditorium – The Auditorium provides meeting rooms and a 714 seat auditorium. The facility is adjacent to Hanson Park and the Allegan District Library and is a wonderful asset for the City.

Oakwood Cemetery – The 40 acre cemetery is on the National Register of Historic Places and serves some of the same passive recreation functions as the City’s parks.



Map 2



Map 3

Allegan Township

The Township does not currently maintain any recreation facilities. The Township Offices are surrounded by vacant land, but there are no facilities. The Township has partnered with the City on some recreation improvements.

Allegan County

Allegan County maintains several parks. Table 2 provides a brief description of the County's parks.

Table 2 – Allegan County Parks

Park	Location	Acreage	Picnic Facilities	Water Features	Active Play Areas	Other
Dumont Lake Park	Monterey Twp.	19	X	X	X	Swimming
Dumont Lake Boat Launch	Allegan Twp	3		X		Boat Launch
Gun Lake Park	Wayland Twp.	4	X	X	X	Swimming
Littlejohn Lake	Allegan Twp.	113	X	X	X	Swimming, Trails
Silver Creek Park	Heath Twp.	320	X	X	X	Swimming, Equestrian, Camping
West Side Park	Ganges Twp.	11	X	X	X	Swimming
Ely Lake Campground	Clyde Twp	90		X		73 camp sites, boat launch
Pine Point Campground	Valley Twp	80		X		32 camp sites, boat launch
Bysterveld Park	Dorr Twp	70				
New Richmond Bridge	Manlius Twp	80		X		Historic bridge

Source: Allegan County Parks and Recreation Plan

State of Michigan Facilities Located within Region 8 (Allegan, Ionia, Kent, Mecosta, Montcalm, Osceola, and Ottawa counties)

Holland State Park – This 142-acre park on Lake Michigan located in the City of Holland, in Ottawa County. The park offers 368 campsites, picnic facilities, swimming, a beach house, a boat launch and fishing.

Saugatuck State Park – This 866-acre park on Lake Michigan is located in the City of Saugatuck, in Allegan County. The park offers swimming, hiking, cross-country skiing, and picnic facilities.

Ionia Recreation Area – This 4,085 acre facility located between Saranac and Ionia in Ionia County has 50 campsites and offers a variety of opportunities including picnic

facilities, playground equipment, swimming, boating, a beach house, a boat launch, hunting, fishing, hiking, cross-country skiing, snowmobiling, mountain biking and horseback riding.

Grand Haven State Park – This 48-acre park is located on Lake Michigan in Ottawa County's Grand Haven. The park provides a variety of opportunities including 182 campsites, picnic and playground facilities, swimming, a beach house and fishing.

Yankee Springs Recreation Area – This 5,017-acre area is located in eastern Allegan County/western Barry County. The recreation area provides many opportunities including 325 campsites, an organization camp, equestrian activities, picnic facilities, swimming, concessions, playground facilities, boat launch areas, an interpretive program, hunting, fishing, hiking, snowmobiling, mountain biking and cross-country skiing.

White Pine Trail – This 92 mile Rail-Trail stretches from Comstock Park, in Kent County, to Cadillac, in Wexford County. The trail is currently open along most of its course, and is paved in many areas. Plans are to pave the entire trail.

State of Michigan Facilities (Located within 50 miles of Region 8)

- Traverse City State Park – Grand Traverse County
- Interlochen State Park – Grand Traverse County
- William Mitchell State Park – Wexford County
- Orchard Beach State Park – Manistee County
- North Higgins Lake State Park – Crawford County
- South Higgins Lake State Park – Roscommon County
- Wilson State Park – Clare County
- Newaygo State Park – Newaygo County
- Charles Mears State Park – Oceana County
- Silver Lake State Park – Oceana County
- Duck Lake State Park – Muskegon County
- Muskegon State Park – Muskegon County
- P. J. Hoffmaster State Park – Muskegon County
- Hart-Montague Trail – Muskegon and Oceana Counties
- Sleepy Hollow State Park – Clinton County
- Fort Custer Recreation Area – Kalamazoo County
- Kal-Haven Trail – Kalamazoo and Van Buren Counties
- Van Buren State Park – Van Buren County
- Warren Dunes State Park – Berrien County
- Grand Mere State Park – Berrien County
- Warren Woods Natural Area – Berrien County

State Game Areas (Located within Region 8)

Allegan County

- Allegan State Game Area

Kent County

- Rogue River State Game Area
- Cannonsburg State Game Area
- Lowell State Game Area

Ottawa County

- Grand Haven State Game Area

Ionia County

- Flat River State Game Area
- Lowell State Game Area
- Portland State Game Area

Montcalm County

- Flat River State Game Area
- Stanton State Game Area
- Langston State Game Area
- Edmore State Game Area
- Vestaburg State Game Area

Osceola County

- Pere Marquette State Forest
- State Wildlife Management Area

Mecosta County

- Pere Marquette State Forest
- Haymarsh Lake State Game Area

Boat Launch Sites

Allegan County has 17 public Boat Launch sites maintained by the Michigan Department of Natural Resources. The list of sites follows. There are additional sites maintained by other recreation providers.

- Big Lake
- Hacklander (Kalamazoo River)
- New Richmond (Kalamazoo River)
- Duck Lake
- Green Lake
- Pike Lake
- Selkirk
- Swan Lake
- Lake Sixteen
- Gun Lake County Park
- Eagle Lake
- M-89 Bridge
- Sheffer Lake
- Miner Lake
- Base Line Lake
- Allegan Dam
- George Schutmaat Park

Campgrounds

In addition to State and County Campgrounds there are several privately operated campgrounds in Allegan County. A summary of these facilities follows.

- Cousins' Campground, South Haven
- Jensen's Campground, South Haven
- Singing Sands RV Park, South Haven
- Hungry Horse Campground, Dorr
- Sandy Pines Wilderness Trails, Hopkins
- East Lake Camping, Hopkins
- Dumont Lake Campground, Allegan
- Schnable Lake Family Campground, Martin
- South Haven Family Campground, South Haven
- Tri-Ponds Family Camp Resort, Allegan
- Giles Campground, Allegan
- Miller Lake Campground, Watson
- Wilderness Ridge Campground, Hamilton

Golf Courses

Allegan County has many golf courses. A list of the known courses follows.

- Orchard Hills, Shelbyville
- Lake Doster, Plainwell
- Lake Monterey, Dorr
- Winding Creek, Holland
- Clearbrook, Saugatuck
- HawksHead Links, Casco Township
- Prairiewood, Otsego
- South Haven Golf Club, Casco Township
- Cheshire Hills, Allegan
- The Ravines, Saugatuck
- Lynx Golf Course, Otsego
- Yankee Springs, Wayland
- Diamond Springs, Hamilton

Ski Areas Within and Near Region 8

- Bittersweet, Allegan County
- Pando, Kent County
- Cannonsburg, Kent County
- Timber Ridge, Van Buren County

Plan Adoption

This section of the Recreation Plan documents that the City of Allegan and Allegan Township have submitted copies of the Plan to the required organizations, held a public meeting, and adopted the Plan. Copies of the following documents are included in Appendix B:

- Letter to Allegan County (Regional Planning Commission did not receive letter since it assisted in planning effort)
- Notice of Issue Identification Workshop held May 15, 2013 (published in The Allegan County News)
- Notice of Public Hearing held September 25, 2013 and Availability of Plan for Public Review (published in Allegan County News)
- Resolution from Joint Planning Commission, Dated September 25, 2013 stating that the City Parks Commission and Township Planning Commission approved the Plan.
- September 25, 2013 minutes from City Parks Commission and Township Planning Commission Joint Meeting and Public Hearing.
- October 14, 2013 City Council minutes with Resolution approving plan
- October 7, 2013 Township Board minutes approving plan

Description of Planning and Public Input Process

The following identifies the steps undertaken to prepare a Five-Year Parks and Recreation Master Plan for the City of Allegan and Allegan Township in accordance with guidelines established by the Michigan Department of Natural Resources.

Community Description – This step includes two major sections. The first section describes the Planning Area's physical features. These features include location, climate, soils, natural features, wildlife, and a description of the area's transportation network.

The second major portion of this step describes the Planning Area's social features. This section describes the existing population and provides information about Allegan County and Michigan for comparison.

Recreation Inventory – The WMRPC developed a description of the facilities through an on-site visit to the Planning Area's parks and other recreation facilities. Information includes acreage, buildings, types of recreation activities, types of equipment, an evaluation of the strengths and weaknesses, surrounding land uses and other descriptions of the physical attributes of the Planning Area's recreation facilities. The inventory includes a description of Allegan County's parks and Michigan State Parks within Region 8 (which includes the counties of Allegan, Ionia, Kent, Mecosta, Montcalm, Osceola, and Ottawa).

Needs Analysis – This step established the Planning Area's recreation issues. The process identified and ranked issues by inviting a varied group of area residents to a workshop. The participants also helped create a series of general actions to address each of the issues.

Action Program – This step identifies what actions the City of Allegan and Allegan Township will perform over the five-year planning period. The Plan identifies actions in an easy to understand format that allow readers to understand each action. The Action Program also identifies where and when an action will occur; who will accomplish the action; how much the action will cost; and potential funding sources. The Action Plan includes a Basis for Action Program that identifies why each of the actions is a priority.

Administrative Structure, Adoption – This step includes describing how both the City of Allegan and Allegan Township administer recreation facilities and activities. This step also includes providing copies of the plan to Allegan County and the West Michigan Regional Planning Commission and working with the MDNR to adopt the plan based on requirements related to public notices/hearings, resolutions, etc.

Issues, Goals, and Objectives

The West Michigan Regional Planning Commission facilitated a work session with the two communities to identify issues on April 10, 2013 and a workshop on May 15, 2013 to help prioritize the issues, set goals, and develop objectives. The workshop was advertised in the Allegan County News. The following people attended the meeting on May 15, 2013 at Allegan Township's Offices.

- Bert Brower
- Mike Buese
- Jim Connell
- Aaron Haskin
- Ted Heckman
- Hollis Hough
- Betty McDaniel
- Paula Mintek
- Lori Perkins
- Cyndi Reed
- Martin Ruiter
- Becky Rininger
- Connie Rushmore
- Stephen Schulz
- Terry Skoglund
- Ruth Smith
- Karl Spreitzer
- Dave Bee (WMRPC)

Everyone had several opportunities during the April 10, 2013 work session to identify issues important to them. The facilitator from the West Michigan Regional Planning Commission took notes of the comments and created a list for the workshop (May 15, 2013 workshop) participants to prioritize by voting on each issue. The prioritized issues, along with goals and objectives, are identified in the following pages. It is interesting that the top three issues include one City-specific issue, one Township-specific issue, and one combined issue.

Issue #1 – Pedestrians and bicyclists face many challenges in the area due to the lack of adequate linkages

Goal #1 – The City and Township will work with the Allegan County Road Commission, the Michigan Department of Transportation, and the Michigan Department of Natural Resources/Michigan Natural Resources Trust Fund to develop a seamless network of pathways, sidewalks, bicycle facilities, and other related infrastructure.

Objectives:

1. The City of Allegan will continue to work with residents and businesses to maintain a network of sidewalks in the more developed areas of the City to ensure pedestrians have safe access throughout the City. Incorporate accessible features throughout the area and crosswalks at key intersections or facilities/attractions.
2. Allegan Township will work with the City of Allegan to identify areas adjacent to the City that lack sidewalks but which are regular pedestrian routes. Coordination is necessary to prevent sidewalks from ending at community boundaries.
3. The City will strive to provide adequate shoulders, pavement markings, signage, and other facilities to reduce conflicts between bicyclists and motorists.
4. Allegan Township will work with the Allegan County Road Commission to identify necessary improvements for creating a network of shoulders, pavement markings, signage, and other facilities to reduce conflicts between bicyclists and motorists.

5. The City of Allegan and Allegan Township will work together to identify linear rights-of-way such as utility corridors and abandoned railroad corridors to develop pathways for non-motorized uses. Include a regional east-west trail that passes through Allegan's Downtown.
6. Other facilities, such as bicycle storage racks and "wayfinding" systems, will be incorporated into the more developed portions of the Planning Area.

Issue #2 – The City of Allegan's Downtown Riverfront, while attractive, is an underutilized resource for recreation and community development.

Goal #2 – The City will incorporate the ideas generated by this planning effort, the recommendations of the report titled *Downtown Allegan Riverfront Development Project: PlacePlan Concept Report, July 2013*, and other ideas and improvements to develop a more attractive, functional, and entertaining riverfront to enhance the City's identity.

Objectives:

1. Strive to make the Downtown Riverfront area a year-round, day-evening, active-passive area that provides a wide range of facilities for residents, shoppers, visitors, and businesses.
2. Consider developing major attractions in the area such as a splash-pad, an ice skating rink, a zip-line course, and/or relocating the farmers market to the area.
3. Improve walkways along the Kalamazoo River to include accessible fishing areas and additional walkways to provide improved linkages between the downtown and the River.
4. Improve existing facilities by repairing, updating, or replacing benches, signs, park facilities, and other public amenities along the Kalamazoo River.
5. Develop additional points of interest along the Riverfront to provide for a more well-rounded experience to attract people to the area on a regular basis – ideas include a clock tower, a zip-line course, an outdoor stage, an improved memorial site, and other similar attractions.
6. Make improvements to the area that make it more visually attractive from the M-40/M-89 Corridor – such as lighting the bridge, plantings, and other improvements to pique travelers' interest.
7. Provide better linkages to the Mill District and the Dam from the Downtown Riverfront area to make better use of both resources.

Issue #3 – Allegan Township does not have local control of any recreation resources and would like to encourage the preservation of undeveloped lakefront property on Miner Lake or other suitable property.

Goal #3 – Allegan Township will work with the Michigan Department of Natural Resources, the Michigan Natural Resources Trust Fund, Land Conservancies, Allegan County, Miner Lake Association, property owners, and others to acquire a 100+ acre parcel of land on Miner Lake with the intent of developing a low impact nature preserve. If the Miner Lake site is not available, or if a more suitable property is identified, then the Township will identify another site to acquire.

Objectives:

1. Work with the Michigan Department of Natural Resources (MDNR) to establish the appropriate steps and timing for purchasing the property. Seek MDNR advice on timing, appropriate costs, and match requirements before seeking a grant or making any movements towards acquiring the property.
2. Meet with Casco Township officials to learn from their experience of developing a natural area on Lake Michigan.
3. Submit grant application to the Michigan Natural Resources Trust Fund once matching funds are identified from other resources such as land donations, private donations, local funds, land conservancies, local foundations, and other resources.
4. Develop a site plan to identify improvements that would emphasize the site's natural features and seek funding for improvements. Apply for development funds after land is acquired and site plan is developed.

Issue #4 – There is a need to continuously maintain and expand recreation opportunities and facilities in the City's existing parks

Goal #4 – The City of Allegan will strive to maintain and improve each of its parks to meet the needs of residents and visitors.

Objectives:

1. The City of Allegan will develop and maintain a preventive maintenance schedule for each park to ensure that the City's substantial investments are protected.
2. The City of Allegan will determine the sustainability of each potential improvement to its recreation system prior to making any investments.
3. Determine the most appropriate improvements necessary to make Rossman Esplanade Park a valued part of the City's recreation system.
4. Develop a schedule to add full restrooms to the City's more major parks that currently do not have complete restroom facilities.
5. Identify boat launch sites to develop and/or maintain both upstream and downstream of the dam.
6. Determine the most appropriate uses for the seven acre Mill Area.

Issue #5 – There is a need for additional recreation facilities at the Allegan Wellness and Sports Complex.

Goal #5 – The City of Allegan and Allegan Township will strive to maintain and update the Allegan Wellness and Sports Complex to meet the needs of the greater community.

Objectives:

1. Maintain an up-to-date list of projects that are needed at the Complex to promote use of the facility, improve the health of the community, and provide a variety of recreational resources.
2. Install additional lighting around the fitness trail.
3. Consider fitness stations around the fitness trail.
4. Develop a disc golf course at the complex.

5. Determine how to better connect the Complex to the population through trails, pathways, sidewalks, and paved shoulders.

Issue #6 – There is a need to coordinate efforts between the City of Allegan, Allegan Township, local organizations, surrounding communities, Allegan County, and others, to ensure a well-funded and comprehensive recreation system.

Goal #6 – The City of Allegan and Allegan Township will strive to coordinate efforts between parks, community organizations, and organizations to make the best use of limited resources.

Objectives:

1. Regularly invite community groups (internal and external to the City and Township) to the City's Parks Commission meetings and the Township's Planning Commission for updates on programs, issues, and actions.
2. Seek funds from the Michigan Natural Resources Trust Fund and Land and Water Conservation Fund (as well as other resources) to provide opportunities to fund all of the recreation activities that the City of Allegan and Allegan Township identify as priorities. Use interest from the City's "Sinking Fund" as match for grants and from various Township resources.
3. Develop a local marketing program to ensure residents and visitors to the area are aware of the many recreation opportunities that currently exist.
4. Work with outside resources (State of Michigan, Allegan County) to promote tourism in the Allegan Area.
5. Work with Allegan Public Schools to make the most of local parks and recreation facilities maintained by the school system.
6. Work with Allegan County to make the most of local parks and parks maintained by the County.
7. Work with local organizations on fund raising projects.

Issue #7 – There is a need to plan for a variety of people, activities, and seasons.

Goal #7 – The City of Allegan and Allegan Township will plan for the recreational needs of all ages and abilities of people by providing a wide range of active and passive recreation opportunities that span Michigan's four seasons.

Objectives:

1. Ensure that all parks are accessible to people with a range of physical capabilities.
2. Ensure facilities and programming offer opportunities for a wide range of ages and household types (family households and non-family households).
3. Plan for each of Michigan's seasons to ensure residents have year-round recreation opportunities.
4. Determine the feasibility of developing an ice skating rink in the City of Allegan.

Issue #8 – There is a need for recreation facilities at the Township Hall.

Goal #8 – Develop the five-acre area around Allegan Township Hall for recreation activities.

Objectives:

1. Develop a plan that includes picnic facilities, accessible pathways, playground equipment, and other related facilities to promote the land around the Township Hall as a family-oriented park.
2. Ensure that adequate funding is available to develop and maintain the park.
3. Consider developing a “three-season building” at the site to be used for a wide range of community-based activities.
4. Seek grant funds to assist in developing site.

Recreation Standards

One way for a community to determine if they are adequately serving the residents is to compare the existing facilities to standards. The following table provides some standards and compares the needs of the City of Allegan's and Allegan Township's projected population of 10,441 to these standards. Overall, the area does very well when compared to the standards.

Table 5 – Recreation Standards

Recreation Facility/Opportunity	Standard (units/ Population)	Required to Meet 2030 Population (10,441)	Existing in the Planning Area (City & Township)
Local Park Land (acres)	1/100	105	83
Ball Fields (a)	1/3,000	3.5 (4)	6
Outdoor Basketball Courts (a)	1/5,000	2.1 (2)	1
Outdoor Ice Rinks	1/20,000	0.5 (1)	0
Picnic Tables	1/200	52 (52)	50 +/-
Playgrounds (a)	1/3,000	3.5 (4)	3 (plus schools)
Soccer Fields (a)	1/20,000	0.5 (1)	4
Outdoor Tennis Courts (a)	1/4,000	2.6 (3)	1
Boat Launches (parking spaces)	1/400	26.1 (26)	0 (County & State have boat launch sites in Planning Area)
Campsites (b)	1/150	69.9 (70)	0 (two camps in Planning Area)
Cross-Country Ski Trails (miles)	1/10,000	1 (1)	0
Fishing Access (feet)	1/1	10,441 (feet)	10,441+
Hiking Trails (miles)	1/5,000	2 (2)	1+
Swimming Beaches (public)	1/25,000	0.4 (0)	0 (County has beach in Planning Area)

Source: National Recreation and Park Association

(a) Does not include school facilities

(b) Includes private facilities

Accessibility Evaluation

The following evaluations were conducted in October 2008 and updated in June 2013.

Hanson Park – This park has designated accessible parking adjacent to it and has paved pathways throughout the facility. The recently updated playground is accessible. Picnic areas are accessible and one table is accessible. Recommendations: None

Jaycee Park – This park has paved pathways throughout and ramped linkages to adjacent pathways. This park also has designated accessible parking. Picnic areas are accessible. The small fishing pier is not accessible. Recommendations: Consider constructing an accessible fishing pier.

Dr. James Mahan Park – This park is very accessible and has nearby designated parking. Recommendations: None.

Riverfront Park and Memorial Park – This park is very accessible and has designated parking along its course. Grades, lack of steps, handrails along the water, and other features make it a very accessible feature. Recommendations: None.

Rossman Esplanade Park – This park is underdeveloped and in need of attention. Sidewalks interior to the park are in poor condition and there is no designated parking (accessible or general parking). The fact that the park is divided by a busy street makes it even less accessible. Recommendations: When improvements to the park are planned ensure that accessibility is incorporated into designs.

Sue Lange Memorial (Triangle) Park – This park is a small garden park and the only real accessibility issue relates to the lack of any on-site parking. Due to the quiet nature of the park and lack of crowds, creating a designated accessible parking space on the street is probably not necessary, but could be considered.

Trestle Trail Park – This park is very accessible and has nearby designated parking. Recommendations: None.

(Allegan) Wellness and Sports Complex – This park has nine designated accessible parking spaces on pavement (the remaining parking areas are gravel). The park has paved pathways leading to all areas of the park and grading is not an issue. Recommendations: Consider adding an accessible picnic table at the concession area.

Water Street Riverfront Park and Mill District– This park is very accessible and designated parking is included in nearby joint parking for the park and adjacent businesses. The area by the dam provides access to the water for fishing or viewing with adequate railing and ramps at the lower pier. Recommendations: Consider adding railing at the upper pier near the dam.

Cook Street Park – This park is a small pocket park and the only real accessibility issue relates to the lack of any on-site parking. Due to the quiet nature of the park and lack of

crowds, creating a designated accessible parking space on the street is probably not necessary, but could be considered.

Status Report of Grant Assisted Parks

The City of Allegan has received two grants from the Michigan Department of Natural Resources.

Grant Number TF90-235 is a closed grant for \$173,900 that the City received in 1990 to make improvements to Jaycee Park. Improvements included ballfield improvements, a canoe launch, a basketball court, a play area and a restroom building. The park continues to serve as one of the City's key parks and the improvements are still in-place, although the City is looking at new improvements that could impact some of the funded improvements that are reaching the end of their expected service.

Grant Number TF02-137 is a closed grant for \$300,000 that the City received in 2002 to make improvements to the Brady Street/Riverfront Boardwalk Development. Improvements included the construction of 850 feet of riverfront boardwalk and walkways to connect existing boardwalk and rustic park. These improvements are very new and are a valued and well-maintained part of the City's network of parks.

Grant Number TF10-096 is an active grant that the City received in 2010 for the amount of \$45,000 to make improvements to the Veterans Memorial Park along the City's Riverfront. Improvements are anticipated to occur in 2013 and will include a variety of improvements designed to make the park more usable for ceremonies.

Allegan Township has not received any grants from the Michigan Natural Resources Trust Fund.

Action Program

The previous sections of this plan lead to performing actions to address the recreation-related needs of the City of Allegan's and Allegan Township's residents and visitors. The following actions identify the year, location, approximate cost, and justifications for improvements. The Action Program is a guide. Some actions may be performed prior to, or after, the scheduled time due to funding opportunities, or difficulties in obtaining funds or other resources. Finally, this does not list all of the actions that should be performed over the five years, the Action Program focuses on physical improvements to facilities, versus administrative tasks.

2014	Action 1
	<p>Action: Develop list of improvements necessary for improving pedestrian and bicycling access in the City and Township, including the development of an east-west-regional trail through Allegan's Downtown, and seek funding from each of the potential resources. Due to the complexity of this issue and the various funding opportunities, the issue could benefit from an additional planning process focusing more on transportation than recreation.</p> <p>Location: City/Township</p> <p>Cost: Administrative</p> <p>Funding Source: Michigan Natural Resources Trust Fund, Michigan Department of Transportation, City of Allegan, Allegan Township, Allegan County Road Commission, other.</p> <p>Justification: Creating pedestrian and bicycle linkages throughout the City and Township was a key issue identified by the planning process. While the Michigan Natural Resources Trust Fund (MNRTF) is typically the key resource used to accomplish the goals of a recreation plan, it should be noted that many of the improvements necessary to address this issue are not eligible for MNRTF dollars. Some necessary actions may qualify, but additional resources will need to be sought to develop a complete system that serves pedestrians and bicyclists.</p>

2014	<p>Action 2</p> <p>Action: The City will incorporate the ideas generated by this planning effort, the recommendations of the Report titled <i>Downtown Allegan Riverfront Development Project: PlacePlan Concept Report, July, 2013</i>, and other ideas and improvements to develop a more attractive, functional, and entertaining riverfront to enhance the City's identity. Key improvements include:</p> <ul style="list-style-type: none">• Making the Downtown Riverfront area a year-round, day-evening, active-passive area that provides a wide range of facilities for residents, shoppers, visitors, and businesses.• Develop an attraction in the area such as a splash-pad, an ice skating rink, a zip-line course, and/or relocating the farmers market to the area.• Improve walkways along the Kalamazoo River to include accessible fishing areas and additional walkways to provide improved linkages between the downtown and the River. Decks for kayakers will also be incorporated into the design.• Improve existing facilities by repairing, updating, or replacing benches, signs, park facilities, and other public amenities along the Kalamazoo River.• Develop additional points of interest along the Riverfront to provide for a more well-rounded experience to attract people to the area on a regular basis.• Make improvements to the area that make it more visually attractive from the M-40/M-89 Corridor – such as lighting the bridge, plantings, and other improvements to pique travelers' interest.• Provide better linkages to the Mill District and the Dam from the Downtown Riverfront area to make better use of both resources. <p>Location: Allegan Riverfront between Hanson Park and Mahan Park</p> <p>Cost: To be determined (Likely to exceed \$1 million)</p> <p>Funding Source(s): City of Allegan Sinking Fund interest, Local Service Clubs, Michigan Department of Natural Resources, private resources, other.</p> <p>Justification: The City of Allegan has developed and maintained a series of parks along the Kalamazoo River in the City's Downtown that provide many recreation opportunities for residents, businesses, and visitors. Improving the existing facilities and adding new and updated facilities will increase the usability of the parks and encourage more people to utilize the facilities. This series of projects has been identified as a key priority during this planning effort and additional planning efforts. Many of the improvements will enhance accessibility to the City's parks.</p>
-------------	---

2014	Action 3 <p>Action: Acquire property on Miner Lake, or other suitable property, to serve as a nature conservancy and area for passive recreation opportunities.</p> <p>Location: Miner Lake or other appropriate site</p> <p>Cost: To be determined (estimated at \$450,000)</p> <p>Funding Source(s): Michigan Natural Resources Trust Fund, Land Conservancies, private donations, Township General Fund, donation of land value.</p> <p>Justification: Allegan Township does not have local control of any recreation resources and would like to encourage the preservation of undeveloped lakefront property on Miner Lake. The Township does not want to lose an opportunity to preserve a large parcel of land to serve the community as a nature preserve and open space area.</p>
2014	Action 4 <p>Action: Develop a schedule to address accessibility issues identified in an earlier section of this plan and to consider restrooms in parks that currently do not have such facilities.</p> <p>Location: Various</p> <p>Cost: To be determined</p> <p>Funding Source(s): City of Allegan Sinking Fund interest, Local Service Clubs, Michigan Department of Natural Resources, private resources, other.</p> <p>Justification: Providing accessible recreation facilities benefits the entire community. Providing restrooms in key locations extends the usefulness of recreation facilities by providing water and restrooms to allow for longer visits to parks.</p>

2014	Action 5
	<p>Action: Coordinate recreation goals and objectives with Allegan County to assist in the continued development of recreation facilities at the 220 acre Allegan County Service Center (Dumont Lake).</p> <p>Location: Allegan County Service Center</p> <p>Cost: Administrative costs for coordinating, cost for improvements to be determined.</p> <p>Funding Source(s): Allegan County, Allegan City, Allegan Township, Local Service Clubs, Michigan Department of Natural Resources, private resources, other.</p> <p>Justification: Coordinating efforts with the County is one way to make the most of efforts and resources. While coordinating may take a little more initial effort, and could delay a project's initial implementation, coordination provides valuable input and could provide additional sources of funding – which means more improvements are possible.</p>

2014	Action 6
	<p>Action: Create a uniform system of signage and facilities in order to improve the visibility of Allegan's parks.</p> <p>Location: City of Allegan</p> <p>Cost: To be determined</p> <p>Funding Source: City of Allegan</p> <p>Justification: Many of the City's parks and trails lack adequate signage and other features to promote the facilities and provide a visual key to park users that adjacent resources are available. By providing additional signs that are uniform in color/size/design, the City can promote itself and its parks to residents and visitors.</p>

2015	Action 1
	<p>Action: Work with various organizations to expand mountain biking by improving Bond Street Trail/area.</p> <p>Location: Bond Street Area (near Bond and Eastern)</p> <p>Cost: To be determined</p> <p>Funding Source: City of Allegan & other organizations</p> <p>Justification: The City's Parks Commission, and others, feel that promoting mountain bicycling within the City is an opportunity to promote fitness and best utilize some of the unique pockets of undeveloped land that exists in the City of Allegan. Some of the trails could also be used to provide pedestrian and bicycling linkages.</p>

2015	Action 2
	<p>Action: Develop a plan to improve Rossman Esplanade Park</p> <p>Location: Rossman Esplanade Park</p> <p>Cost: To be determined</p> <p>Funding Source: City of Allegan</p> <p>Justification: Planning for an improved park is necessary. Currently, the park is an underutilized community facility with limited opportunities for active or passive recreation (with the exception of tennis and picnics). The park is in a very visible part of the community and should be revitalized to provide opportunities for both the City and the adjacent neighborhood. Care should be exercised in designing facilities that will not detract from the adjacent homes.</p>

2016	Action 1
	<p>Action: Determine the most appropriate improvements for the Allegan Sports Complex including lighting, fitness stations, disc-golf course, and other improvements.</p> <p>Location: Allegan Sports Complex</p> <p>Cost: To be determined</p> <p>Funding Source(s): City of Allegan Sinking Fund interest, Local Service Clubs, Michigan Natural Resources Trust Fund, private resources, other.</p> <p>Justification: The large complex has adequate room available for many additional facilities. Determining the most appropriate improvements and developing a design and cost estimate will build community support for the use of public resources to make improvements.</p>

2016	Action 2
	<p>Action: Identify the best locations for boat access (including kayaks) to the Kalamazoo River, both upstream and downstream of the dam. Ensure that parking is incorporated into the overall planning for the facilities.</p> <p>Location: City of Allegan</p> <p>Cost: To be determined</p> <p>Funding Source(s): City of Allegan Sinking Fund interest, Local Service Clubs, Michigan Natural Resources Trust Fund, private resources, other.</p> <p>Justification: Access to the Kalamazoo River is a wonderful community asset that should be made into a priority. The City has enough existing park space along the River that it should be able to incorporate river access into future improvements.</p>

2017	Action 1 <p>Action: Develop a plan that includes picnic facilities, accessible pathways, playground equipment, a three-season building, and other related facilities to promote the land around the Township Hall as a family-oriented park. Seek funding to implement plan.</p> <p>Location: Allegan Township Hall</p> <p>Cost: \$50,000.00</p> <p>Funding Source(s): Michigan Natural Resources Trust Fund, Michigan Passport, Allegan Township, Local Service Clubs, Michigan Department of Natural Resources, private resources, other.</p> <p>Justification: Developing a park at the Township Hall is a good project for the Township to undertake since the Township already owns the land and the Township Hall is already a public gathering place. Improving the site with picnic facilities, a general purpose game field, a playground, and accessible pathways is a visible project that promotes recreation, makes better use of existing facilities, and provides a needed resource.</p>
2018	Action 1 <p>Action: Update Recreation Plan</p> <p>Cost: \$5,000</p> <p>Funding Source(s): City of Allegan and Allegan Township</p> <p>Justification: An up-to-date Recreation Plan provides goals for the communities to follow related to improving recreation opportunities.</p>

Conclusions

This Joint Recreation Plan represents the first time the City of Allegan and Allegan Township have developed one plan identifying the goals of both communities related to recreation. But, the Joint Recreation Plan is not the first time the communities have developed recreation plans or the first time that the two communities have collaborated to provide for the area's needs. Five years ago the two communities developed plans simultaneously and there were many similar goals (both plans were developed by the West Michigan Regional Planning Commission) and since those two plans were developed the two communities have collaborated on the area's largest park to fund improvements.

This plan identifies activities that require both communities' input, as well as activities specific to each community. The Allegan's Riverfront, Non-Motorized Facilities (trails, sidewalks, shoulders, etc.), and property acquisition at Miner Lake are three key activities identified in the Plan. Moving forward with the Plan's actions will require cooperation between the communities as well as cooperation between other agencies including Allegan County Road Commission, the Michigan Department of Natural Resources/Michigan Natural Resources Trust Fund, the Michigan Department of Transportation, and others.

APPENDIX A

Physical Features

The following section describes many of the Planning Area's natural and man-made features. The purpose is to provide users of this Plan with an overview of the natural features since recreation activities are closely related to the Planning Area's physical features.

Location

Allegan County is in Western Michigan and is bordered by Ottawa and Kent counties to the north, Barry County to the east, Van Buren and Kalamazoo counties to the south and Lake Michigan to the west. Allegan County is six miles north of Kalamazoo and six miles south of Grand Rapids. The City of Allegan and Allegan Township are in the central portion of Allegan County.

Climate

Allegan County's weather, like all of Michigan's, influences the recreational opportunities available throughout the year. Lake Michigan has a moderating effect on the County's weather. The area can support a variety of activities throughout the year from swimming to skiing. Table 2 identifies information related to the area's climate. Generally, January is the coldest month (23.3 average daily temperature) and has the highest snowfall (25.8 inches). July is generally the warmest month in the County (71.5 average daily temperature). June usually has the highest average precipitation (3.9 inches) and February generally has the lowest average (1.7 inches). Prevailing winds are from the west.

Table A1 – Climate in Allegan County

	Temperature (F)			Precipitation (inches)	
	Average Daily Maximum	Average Daily Minimum	Average Daily	Average	Average Snowfall
January	30.8	15.8	23.3	2.6	25.8
February	34.2	16.1	25.1	1.7	13.3
March	43.7	25.4	34.5	2.7	9.4
April	58.5	36.3	47.4	3.4	2.1
May	70.6	46.2	58.4	2.9	0.0
June	79.6	55.5	67.6	3.9	0.0
July	83.5	59.6	71.5	3.2	0.0
August	81.6	57.8	69.7	3.3	0.0
September	74.7	50.6	62.6	3.2	0.0
October	62.9	40.3	51.6	2.9	0.7
November	48.0	31.4	39.7	3.0	8.6
December	35.7	21.5	28.6	2.9	19.9
Year	58.6	38.0	48.3	35.7	79.7

Source: U.S. Department of Agriculture

Land Use

The City of Allegan has a traditional mix of land uses. Single family housing occupies a large proportion of the City. Allegan has a nice downtown that includes both commercial/service uses as well as public land uses (Allegan is the County Seat). In addition to the downtown, there are commercial businesses located along the three state routes that converge in the City (M-40, M-89, and M-222). Public facilities are also located throughout the City and include parks, schools, the airport (just outside the City), and City and County services. There is industrial land in the City, but it is relatively low impact.

Allegan Township has a traditional mix of rural land uses. Agricultural areas and low density single family housing occupy a large percentage of the Township's land. Allegan Township has commercial/service uses along the state routes that pass through the Township (M-40, M-89, and M-222). Public facilities are also located throughout the Township and include a county park, schools, and County services.

Soils

The following information is taken from the Soil Survey of Allegan County, Michigan. The entire City of Allegan is within one soil association, described below:

Oakville Association – Nearly level to steep, moderately well drained and well drained soils formed in sandy material; on outwash plains, lake plains, dunes, moraines, and beach ridges. This association makes up 22 percent of the county. It is about 75 percent Oakville soils and 25 percent soils of minor extent.

The following information is taken from the Soil Survey of Allegan County, Michigan. Allegan Township is comprised of five broad soil associations, described below:

Capac-Rimer-Pipestone Association – Nearly level and undulating, somewhat poorly drained soils formed in loamy, sandy, and silty material; on moraines, till plains, lake plains, and outwash plains. This association makes up about 24 percent of the county. It is about 40 percent Capac soils, 10 percent Rimer soils, 10 percent Pipestone soils and 40 percent soils of minor extent. Most areas of this association are used as cropland.

Chelsea-Ockley-Oshtemo Association – Nearly level to gently rolling, somewhat excessively drained and well drained soils formed in sandy and loamy material; on moraines, outwash plains, terraces, and valley trains. This association makes up about 14 percent of the County. It is about 25 percent Chelsea and similar soils, 20 percent Ockley and similar soils, 20 percent Oshtemo soils, and 35 percent soils of minor extent.

Morocco-Newton-Oakville Association – Nearly level and undulating, somewhat poorly drained, very poorly drained, well drained, and moderately well drained soils formed in sandy material; on outwash plains, lake plains, and beach ridges. This association makes up about 10 percent of the county. It is about 30 percent Morocco soils, 20 percent Newton soils, 20 percent Oakville soils and 30 percent soils of minor extent. Most areas of this association are used as woodland.

Marlette-Capac-Metea Association – Nearly level to very hilly, moderately well drained, somewhat poorly drained, and well drained soils formed in loamy and sandy material; on moraines and till plains. This association makes up about 19 percent of the County. It is about 40 percent Marlette and similar soils, 15 percent Capac and similar soils, 15 percent Metea soils, and 30 percent soils of minor extent.

Sebewa-Colwood-Brady Association – Nearly level, poorly drained and somewhat poorly drained soils formed in loamy, sandy, and silty material; on outwash plains, lake plains, valley trains, and terraces. This association makes up about 3 percent of the County. It is about 30 percent Sebewa soils, 30 percent Colwood soils, 30 percent Brady and similar soils, and 10 percent soils of minor extent.

Oakville Association – Nearly level to steep, moderately well drained and well drained soils formed in sandy material; on outwash plains, lake plains, dunes, moraines, and beach ridges. This association makes up 22 percent of the county. It is about 75 percent Oakville soils and 25 percent soils of minor extent.

Topography

The topography ranges from a low of 580 feet above mean sea level at the Kalamazoo River, to over 950 feet above mean sea level in several northern portions of the Township (Sections 1, 8, and 9).

Water Features

The Kalamazoo River passes through the City of Allegan and Allegan Township on its way to Lake Michigan 20 miles to the west. The Kalamazoo River Watershed is the primary watershed, which is fed by several sub-watersheds. Lake Allegan (just downstream from the City of Allegan) is a manmade lake created by damming the Kalamazoo River in Valley Township.

Wildlife

Allegan County's wildlife is typical of that found in most of lower Michigan. Common wildlife includes deer, raccoons, opossums, rabbits, muskrats, beavers, squirrels, rodents and other small mammals. The area is home to a variety of birds including owls, wild turkeys, pheasants and many others. The area is also a seasonal home to many migratory birds including ducks and Canada Geese.

Native Vegetation

Originally, Michigan was covered with a dense forest of deciduous trees. As the area was cleared for farming and development, or the trees were removed for timber, the area's forests were replaced by farm fields, open field areas, orchards and smaller forested areas containing both deciduous and coniferous trees.

Transportation

The City of Allegan and Allegan Township are served by three two-lane state routes. M-40 passes through the City and Township and links Holland to the north, to areas south of Allegan, going almost to Michigan's southern border. M-89 also passes through the City and Township and goes west to Lake Michigan and east through Plainwell-Otsego and eventually ending in Battle Creek. M-222 is an east-west route linking Allegan to US-131. US-131 is a north-south interstate on the east side of Allegan County and I-196/US-31 is a north-south interstate on the west side of Allegan County.

Social Features

This section describes the population of the City of Allegan, Allegan Township, Allegan County, and Michigan. The description focuses on the Planning Area and its unique population characteristics.

Population Trends and Projections

If a community uses only recreation standards to guide its recreation-related decisions, the total population numbers identified in Table A-2 are the only numbers needed. But, no community bases all of its decisions on only standards, so additional information is provided. The needs of the population need to be further explored by looking at who makes up the population and identifying their desires.

Table A-2 – Population Trends and Projections

AREA	Trends			Projections	
	1990	2000	2010	2020	2030
City of Allegan	4,547	4,838	4,998	5,166	5,335
Allegan Township	3,976	4,050	4,406	4,756	5,106
Allegan County	90,509	105,665	111,408	123,454	135,498
Michigan	9,295,277	9,938,444	9,883,640	---	---

Source: U.S. Census of Population; West Michigan Regional Planning Commission

Table A-2 shows that the City of Allegan's population increased slightly between 1990 and 2010 to reach 4,998 residents. This represents an increase over the 20-year period of 9.9 percent. The table also shows that Allegan Township's population increased between 1990 and 2010 to reach 4,406 residents, an increase of 10.8 percent. During the same period the County's population increased by 23.1 percent to reach 111,408 and Michigan's population decreased by 6.3 percent to reach 9,883,640.

The projections in Table A-2 are based on past trends and projections prepared by the West Michigan Regional Planning Commission. The projections indicate that by 2030 the City's population will increase to 5,335, the Township's population will increase to 5,106, and the County's population will reach 135,498.

Age Distribution

While the overall population is the most important consideration, there are other characteristics to consider when planning for a community's recreation. A Community's age distribution influences the types of facilities and programs needed. Table A-3 shows that the City's median age is (34.6) and the Township's median age is (43.6), which vary by almost 10 years. The distribution of age groups in the Planning Area has several differences when compared to the comparison areas, but the biggest difference is that the Planning Area has a slightly higher proportion of people over 65 than Allegan County or Michigan – overall the population distribution is fairly normal. This indicates the Planning Area should

Appendix A

have recreation facilities and activities that meet the needs of the adult population and the retired population, as well as facilities for youth.

Table A-3 – Age Distribution

	City of Allegan		Allegan Township		Allegan County		Michigan
	#	%	#	%	#	%	%
Under 5	405	8.1	244	5.5	7,501	6.7	6.0
5-19	1,014	20.2	895	20.3	24,428	22.0	20.8
20-24	373	7.5	187	4.2	5,816	5.2	6.8
25-34	737	14.7	414	9.4	12,201	10.9	11.8
35-44	640	12.8	561	12.7	14,691	13.3	12.9
45-54	660	13.2	673	15.2	18,121	16.2	15.2
55-64	562	11.3	649	14.8	14,158	12.7	12.7
65-84	503	10.1	658	14.9	12,589	11.3	11.8
85+	104	2.1	125	2.8	1,849	1.7	1.9
Total	4,998	100.0	4,406	100.0	111,408	100.0	100.0
Median	34.6	---	43.6	---	39.2	---	38.9

Source: 2010 U.S. Census of Population

Male/Female Distribution

Most communities have a higher proportion of females since they have a longer life expectancy. In Michigan, females account for 50.9 percent of the population. Table A-4 shows that the Planning Area follows this trend since it has a higher proportion of females (51.6 and 50.4 percent). At the County level the population is almost evenly split between the genders, with females holding a slim majority (50.2 percent). The male to female ratio probably has very little influence on the area's recreation needs.

Table A-4 – Male/Female Distribution

	City of Allegan		Allegan Township		Allegan County		Michigan
	#	%	#	%	#	%	%
Male	2,417	48.4	2,185	49.6	55,473	49.8	49.1
Female	2,581	51.6	2,221	50.4	55,935	50.2	50.9
Total	4,998	100.0	4,406	100.0	111,408	100.0	100.0

Source: 2010 U.S. Census of Population

Racial Distribution

The Planning Area's racial distribution is similar to Allegan County's but different than Michigan's distribution in most respects. Table A-5 shows the City and Township's population is mostly White (91.4 and 96.2 percent) with the remaining people split into several small categories. The one minority group in the City that makes up a greater proportion of the population than it does statewide is the "2 or More Races" group. This group makes up 2.4 percent of the City's population while it only makes up 1.3 percent of Michigan's population. Allegan Township has a lower proportion of minorities than all other comparison jurisdictions. The State has a lower proportion of White residents, while

the County has a higher proportion. The Planning Area's racial distribution has very little (if any) influence on the area's recreation.

Table A-5 – Racial Distribution

	City of Allegan		Allegan Township		Allegan County		Michigan
	#	%	#	%	#	%	%
White	4,567	91.4	4,239	96.2	103,513	92.9	78.9
Black	215	4.3	48	1.1	1,358	1.2	14.2
American Indian, Alaskan Native	28	0.6	17	0.4	636	0.6	0.6
Asian Native Hawaiian/Pacific Islander	40	0.8	19	0.4	670	0.6	2.4
Other Race	26	0.5	14	0.3	3,082	2.8	1.5
2 or More Races	122	2.4	69	1.6	2,149	1.9	2.3
Total	4,998	100.0	4,406	100.0	111,408	100.0	100.0

Source: 2010 U.S. Census of Population

Household Distribution

Household distribution can influence a community's recreation needs since the distribution often identifies unique community traits. The Planning Area has several household characteristics that may influence the recreation programming. Table A-6 shows the City has a slightly lower proportion of family households (60.5 percent) than Michigan (66.4 percent) and both the City and Michigan are lower than Allegan Township (70.1 percent) and Allegan County (73.7 percent). Within the overall category of family households, the City has a lower percentage of married couple families than the comparison areas and a higher proportion of female householders with no spouse than Allegan County and Michigan. Allegan Township has a higher percentage of married couple families than the State but is almost identical to the County. The Planning Area has a similar percentage of male householders with no spouse as the County and the State. Since the City has a lower proportion of family households, it follows that it has a higher proportion of non-family households than Michigan. The City of Allegan has a similar proportion of one-person households (28.3 percent), and a higher proportion of householders 65 and over living alone when compared to the State. Allegan Township has a lower proportion of one-person households (24.7 percent), as well as a lower proportion of householders 65 and over living alone when compared to the State. Allegan County as a whole has lower rates of both of these populations as compared to the Planning Area and Michigan.

This information identifies the need to provide activities for family households and non-family households in the Planning Area. Additionally, single parent households comprise a sizeable segment of the population and should not be forgotten. Also, one-person households, including older residents should be considered.

Table A-6 – Household Distribution

Appendix A

	Total Households	Family Households				Nonfamily Households			Persons per Household	Persons in Group Quarters
		Total	Married Couple Family	Female Householder with no Spouse	Male Householder with no Spouse	Total	Householder Living Alone	Householder 65 & Over Living Alone		
City of Allegan	1,987	1,202	843	292	67	785	563	249	2.35	??
%	100.0	60.5	42.4	14.7	3.4	39.5	28.3	12.5	---	---
Allegan Township	1,759	1,249	1,057	106	86	510	434	139	2.41	??
%	100.0	71.0	60.1	6.0	4.9	29.0	24.7	7.9	---	---
Allegan County	42,078	31,010	23,438	3,896	1,800	11,068	8,835	3,112	2.62	??
%	100.0	73.7	60.2	9.3	4.3	26.3	21.0	7.4	---	---
Michigan (%)	100.0	66.4	49.8	12.5	4.2	33.6	28.2	9.9	2.53	---

Source: U.S. Census Bureau, 2006-2010 American Community Survey

Physical Disabilities

Table A-7 indicates the Planning Area has a higher proportion of residents with disabilities than Allegan County or Michigan in all age groups. When planning for recreation facilities and activities the City and Township should insure accessibility for a wide range of facility and program users.

Table A-7 – Physical Disabilities

	Population 5-20 with a disability	Population 21-64 with a disability	Population 65 and over with a disability
City of Allegan	160	519	369
%	13.5	21.3	56.0
Allegan Township	131	481	333
%	13.2	21.6	55.4
Allegan County	2,118	9,911	4,711
%	7.9	16.7	42.2
Michigan (%)	8.5	18.1	42.3

Source: 2000 U.S. Census of Population

Employment

Table A-8 identifies employment distribution in the City, Township, County and Michigan. In the City of Allegan, the largest employment category is “Manufacturing” (28.5 percent) followed by “Retail Trade” (16.6 percent), and “Educational Services, Health Care and Social Assistance” (16.0 percent). In Allegan Township, the largest employment category is “Manufacturing” (24.3 percent) followed by “Educational Services, Health Care and Social Assistance” (21.3 percent), and “Retail Trade” (13.6 percent). Allegan County’s employment distribution is identical to Allegan Township with all three largest categories being the same; however the City of Allegan does not quite match up with Allegan County’s second and third largest categories. Michigan’s three largest employment distribution categories are in a different order than the previous three locations, but consist of the same largest categories.

Appendix A

The employment information shows the area's employment diversity and emphasizes the variety that exists. Many workers have active jobs while others have sedentary jobs. Facilities and programs should exist that benefit both of these categories. The City and Township should also consider people's alternate hours when setting hours for recreation programs.

Table A-8 – Labor Force Employment

	City of Allegan		Allegan Township		Allegan County		Michigan
	#	%	#	%	#	%	%
Employed Persons 16 and Over	2,122	100.0	1,732	100.0	51,416	100.0	100.0
Agriculture, Forestry, Fisheries and Mining	23	1.1	83	4.8	1,600	3.1	1.3
Construction	130	6.1	135	7.8	4,059	7.9	5.3
Manufacturing	605	28.5	421	24.3	12,584	24.5	17.6
Transportation, Warehousing and Utilities	41	1.9	70	4.0	2,516	4.9	4.2
Wholesale Trade	102	4.8	40	2.3	2,011	3.9	2.8
Retail Trade	352	16.6	235	13.6	5,891	11.5	11.6
Information	11	0.5	34	2.0	573	1.1	1.9
Finance, Insurance, and Real Estate	75	3.5	40	2.3	2,051	4.0	5.7
Professional, Technical, and Administrative Services	161	7.6	88	5.1	3,592	7.0	8.9
Arts, Entertainment, Recreation, Accommodation and Food Services	77	3.6	129	7.4	3,792	7.4	9.1
Educational Services, Health Care and Social Assistance	339	16.0	369	21.3	9,080	17.7	23.2
Other Services	169	8.0	61	3.5	2,556	5.0	4.7
Public Administration	37	1.7	27	1.6	1,111	2.2	3.8

Source: U.S. Census Bureau, 2006-2010 American Community Survey

Socio-Economic Levels

The Planning Area's household income levels are lower than the comparison areas. Table A-10 shows the City of Allegan's 5-year median household income was \$40,673 and Allegan Township's 5-year median household income was \$40,972. These figures are lower than Allegan County's median of \$50,240 and Michigan's median household income of \$48,432. The Planning Area also has a lower per capita income than the County or Michigan. The percentage of residents below the poverty level in the City of Allegan was higher than the County's percentage and Michigan's, however, Allegan Township had a lower percentage below the poverty level.

This information indicates the City of Allegan and Allegan Township need affordable recreation opportunities for their residents.

Table A-10 – Socio-Economic Levels

	Median Household Income	Per Capita Income	% of Population Below Poverty Level
City of Allegan	\$40,673	\$18,928	21.5
Allegan Township	\$40,972	\$21,261	10.0
Allegan County	\$50,240	\$23,108	11.9
Michigan	\$48,432	\$25,135	14.8

Source: U.S. Census Bureau, 2006-2010 American Community Survey

APPENDIX B

November 1, 2013

Mr. Dan Wedge, Director
Allegan County Parks and Recreation
3255 122nd Avenue, Suite 102
Allegan, Michigan 49010

Subject: City of Allegan Recreation Plan

Dear Mr. Wedge,

The West Michigan Regional Planning Commission recently worked with the City of Allegan and Allegan Township to develop a joint recreation plan for the two communities. Enclosed is a copy of the plan for your files. The Michigan Department of Natural Resources requires that a copy of the plan is submitted to the Regional Planning Agency and the County to allow cooperation and coordination of efforts.

Please let us know if there is anything we can do to improve the plan.

Sincerely,

Dave Bee, AICP
Director

Enclosure

NOTICE OF PUBLIC HEARING

**CITY OF ALLEGAN
NOTICE OF PUBLIC MEETING FOR
THE CITY OF ALLEGAN AND ALLEGAN TOWNSHIP
JOINT RECREATION PLAN**

XXXX

Notice is hereby given that a public meeting will be held at on _____ at _____ p.m. by the City of Allegan Parks Commission on the City of Allegan and Allegan Township Joint Recreation Plan.

Oral comments will be accepted at the hearing or written comments can be submitted to the Parks Commission prior to the meeting. Copies of the plan are now available for review at the City Offices. Contact the City Clerk at (269) 673-5511 for additional information.

CITY OF ALLEGAN

City Clerk

RESOLUTION ADOPTING THE

**CITY OF ALLEGAN AND ALLEGAN TOWNSHIP
JOINT RECREATION PLAN**

September 25, 2013

WHEREAS, the Parks Commission of the City of Allegan and the Allegan Township Planning Commission have reviewed the City of Allegan and Allegan Township Joint Recreation Plan, and

WHEREAS, after due notice in the Allegan County News, a paper of general circulation in the City of Allegan, a meeting was held September 25, 2013 at 7:00 p.m. at the Griswold Auditorium, 401 Hubbard Street, Allegan Michigan, 49010 for the purpose of hearing comments related to the City of Allegan and Allegan Township Joint Recreation Plan at said Public Hearing.

NOW THEREFORE BE IT RESOLVED, the Parks Commission of the City of Allegan and the Allegan Township Planning Commission approve the City of Allegan and Allegan Township Joint Recreation Plan.

Chair, Parks Commission of the City of Allegan

City Clerk

Chair, Allegan Township Planning Commission

Township Clerk

RESOLUTION ADOPTING THE

**CITY OF ALLEGAN AND ALLEGAN TOWNSHIP JOINT
RECREATION PLAN**

_____, 2013

WHEREAS, the City Council of the City of Allegan has reviewed the City of Allegan and Allegan Township Joint Recreation Plan, and

WHEREAS, after due notice in the Allegan County News, a paper of general circulation in the City of Allegan, a meeting was held _____ at the _____ for the purpose of hearing comments related to the City of Allegan and Allegan Township Joint Recreation Plan at said Public Hearing.

NOW THEREFORE BE IT RESOLVED, the City Council of the City of Allegan approves the City of Allegan and Allegan Township Joint Recreation Plan.

Mayor

NOTICE OF PUBLIC HEARING

**ALLEGAN TOWNSHIP
NOTICE OF PUBLIC MEETING FOR
THE CITY OF ALLEGAN AND ALLEGAN TOWNSHIP RECREATION PLAN
XXXX**

Notice is hereby given that a public meeting will be held at on ____ at ____ p.m. by the Allegan Township Planning Commission on the City of Allegan and Allegan Township Joint Recreation Plan.

Oral comments will be accepted at the hearing or written comments can be submitted to the Allegan Township Planning Commission prior to the meeting. Copies of the plan are now available for review at the Township Offices. Contact the Township Clerk at (269) 673-5051 for additional information.

ALLEGAN TOWNSHIP

Township Clerk

RESOLUTION ADOPTING THE

**CITY OF ALLEGAN AND ALLEGAN TOWNSHIP JOINT
RECREATION PLAN**

_____, 2013

WHEREAS, The Allegan Township Board has reviewed the City of Allegan and Allegan Township Joint Recreation Plan, and

WHEREAS, after due notice in the Allegan County News, a paper of general circulation in Allegan Township, a meeting was held _____ at the _____ for the purpose of hearing comments related to the City of Allegan and Allegan Township Joint Recreation Plan at said Public Hearing.

NOW THEREFORE BE IT RESOLVED, the Allegan Township Board approves the City of Allegan and Allegan Township Joint Recreation Plan.

Township Supervisor

Township Clerk

Press Release

The City of Allegan Parks Commission and the Allegan Township Planning Commission are working with the West Michigan Regional Planning Commission to develop an Area-wide Recreation Plan. The Plan is required by the Michigan Department of Natural Resources to qualify the City and Township for grant funds for park improvements.

The City and Township are holding an issue identification workshop to solicit ideas from residents of the City of Allegan and Allegan Township. The meeting will be held May 15, 2013, at 7:00 p.m. at Allegan Township Hall, 3037 118th Avenue, Allegan Michigan 49010. The meeting will last approximately 60 minutes and will allow everyone with an opportunity to express their thoughts on what types of recreation-related improvements should be a priority over the next five years.

Public Notice

The City of Allegan Parks Commission and Allegan Township are holding an issue identification workshop as part of the process to develop an Area-wide Parks and Recreation Plan. The meeting will be held May 15, 2013, at 7:00 p.m. at Allegan Township Hall, 3037 118th Avenue, Allegan Michigan 49010

NOTICE OF PUBLIC HEARING

**CITY OF ALLEGAN & ALLEGAN TOWNSHIP
NOTICE OF PUBLIC MEETING FOR
THE CITY OF ALLEGAN AND ALLEGAN TOWNSHIP
JOINT RECREATION PLAN
Allegan Township Hall
3037 118th Avenue
Allegan, Michigan 49010
September 25, 2013
7:00 p.m.**

Notice is hereby given that a public meeting will be held at on September 25, 2013 at 7:00 p.m. by the City of Allegan Parks Commission and the Allegan Township Planning Commission on the City of Allegan and Allegan Township Joint Recreation Plan.

Oral comments will be accepted at the hearing or written comments can be submitted to the City of Allegan Parks Commission or the Allegan Township Planning Commission prior to the meeting. Copies of the plan are now available for review at the City Offices and Township Offices. Contact the City Clerk at (269) 673-5511 or the Township Clerk at (269) 673-5051 for additional information.

CITY OF ALLEGAN

City Clerk

ALLEGAN TOWNSHIP

Township Clerk